



Forest Heath District Council

# Local Plan Policies Map Book

(Submission draft Regulation 19)

January 2017



Forest Heath  
District Council

## Policies and Inset Maps Key

	Forest Heath district boundary		Local nature reserves (CS2, DM10, DM11, DM12)
	Settlement boundary (CS10) (SA1)		County wildlife sites (CS2, DM10, DM11, DM12)
	Residential (SA2(a-b), SA5(a-b), SA6(a, c-f), SA7(b), SA8 (a, b, d), SA9(a-d), SA11(a-d), SA12(a), SA13(a), SA14(a))		Special protection areas (CS2, DM10, DM11, DM12)
	Employment allocations (SA17(a-b))		RIGs (CS2, DM10)
	Mixed use (SA4(a), SA6(b), SA7(a), SA10(a), SA13)		SSSI (CS2, DM10, DM11, DM12)
	Retail (SA18)		400m Woodlark/Nightjar constraint zone (CS2, DM10, DM11, DM12)
	Cemetery (SA3)		1500m Stone Curlew constraint zone (CS2, DM10, DM11, DM12)
	School expansion site (SA14, SA15)		1500m Stone Curlew nesting constraint zone (CS2, DM10, DM11, DM12)
	Existing employment areas (SA16(a-n))		Special areas of conservation (CS2, DM10, DM11, DM12)
	Buffer (SA7, SA8, SA9(a), SA9(d), SA10)		Countryside (CS2, DM10, DM11, DM12)
	Yellow Brick Road, Newmarket (SA6(d), SA16(m), CS2)		Outside plan area
	Primary shopping area (DM35)		
	Town centre masterplan boundary (SA19)		
	Town centre boundary (DM35)		
	Conservation areas (DM17)		
	Scheduled monuments (DM20)		
	Roadside Nature Reserves (CS2)		

### Document References

Site Allocation Local Plan Submission Draft (January 2017) = SA1 - SA19

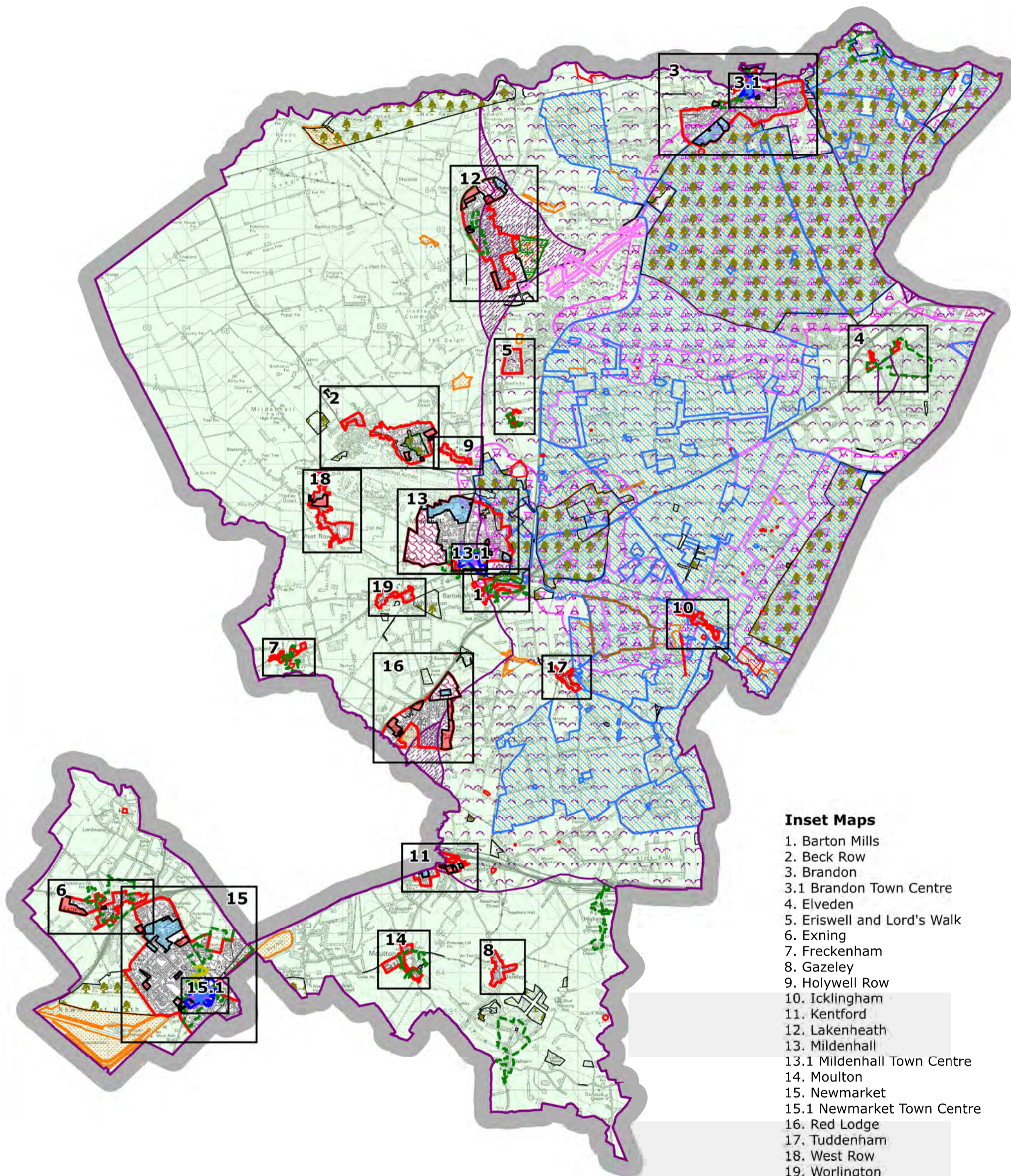
Forest Heath & St Edmundsbury Joint Development Management Policies Document (February 2015) = DM

Forest Heath Core Strategy Development Plan Document (May 2010) = CS



# Forest Heath District Council Local Plan Submission Draft Policies Map

January 2017



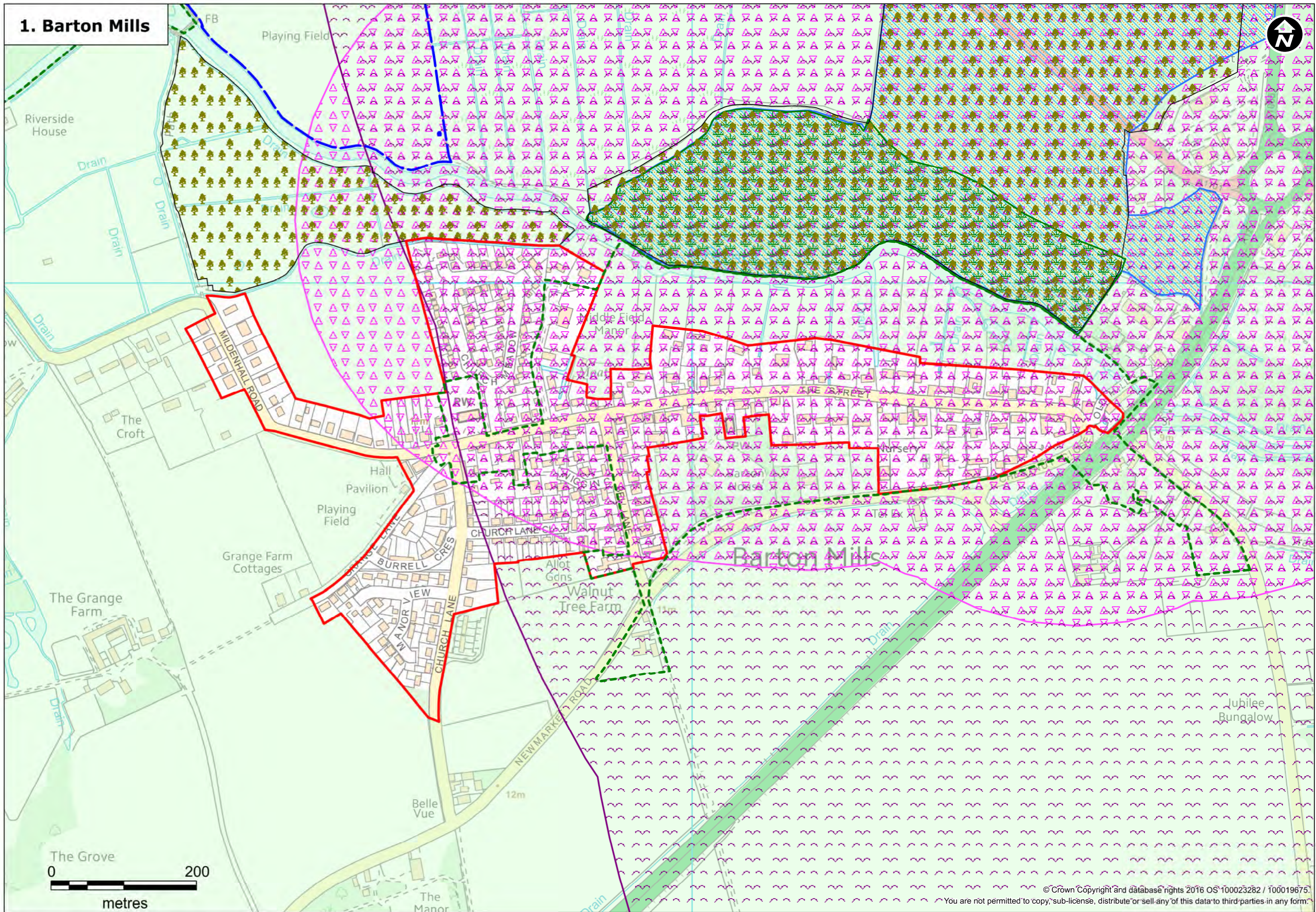
### Inset Maps

1. Barton Mills
2. Beck Row
3. Brandon
- 3.1 Brandon Town Centre
4. Elveden
5. Eriswell and Lord's Walk
6. Exning
7. Freckenham
8. Gazeley
9. Holywell Row
10. Icklingham
11. Kentford
12. Lakenheath
13. Mildenhall
- 13.1 Mildenhall Town Centre
14. Moulton
15. Newmarket
- 15.1 Newmarket Town Centre
16. Red Lodge
17. Tuddenham
18. West Row
19. Worlington



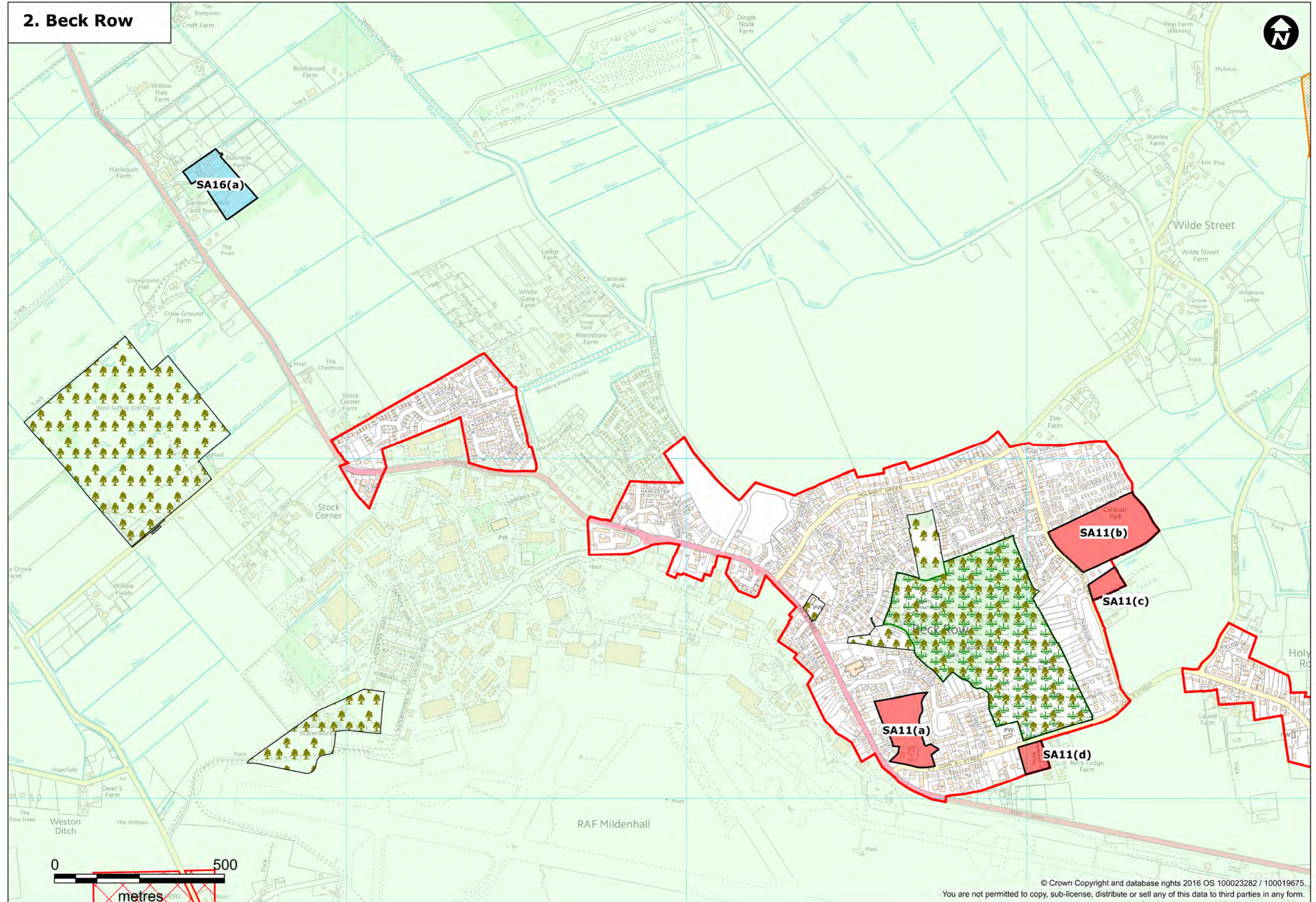


# 1. Barton Mills



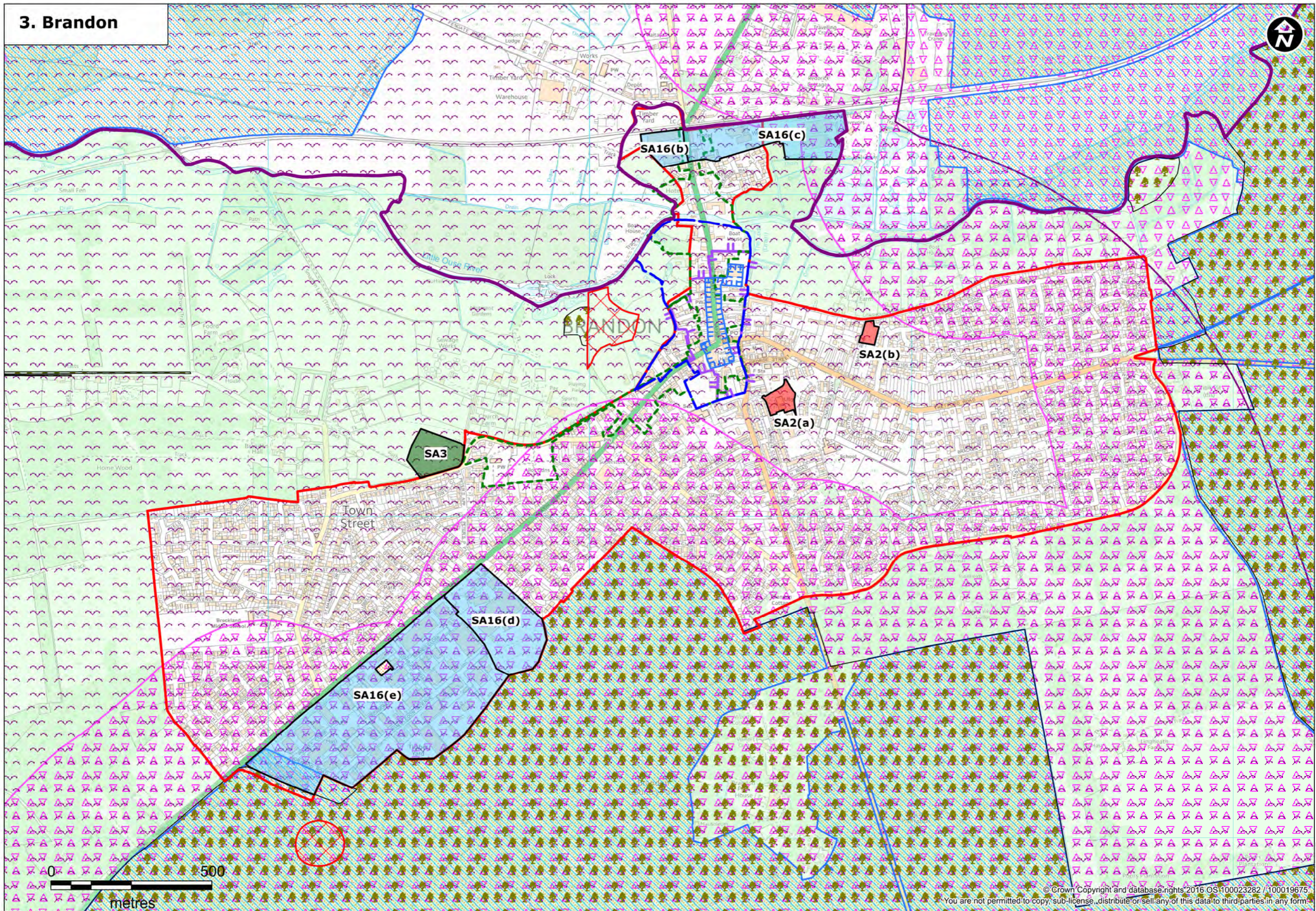


## 2. Beck Row



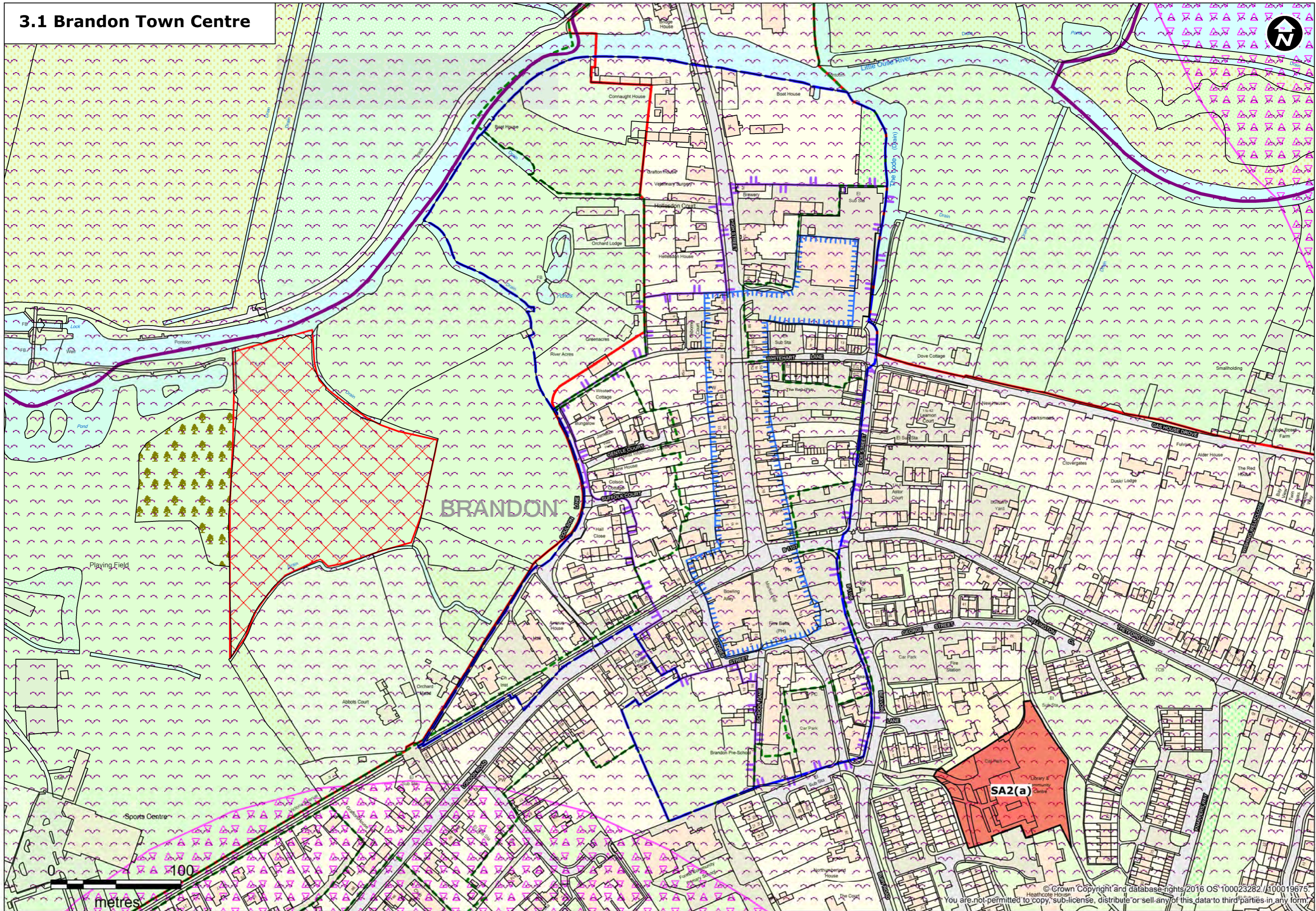


### 3. Brandon





### 3.1 Brandon Town Centre

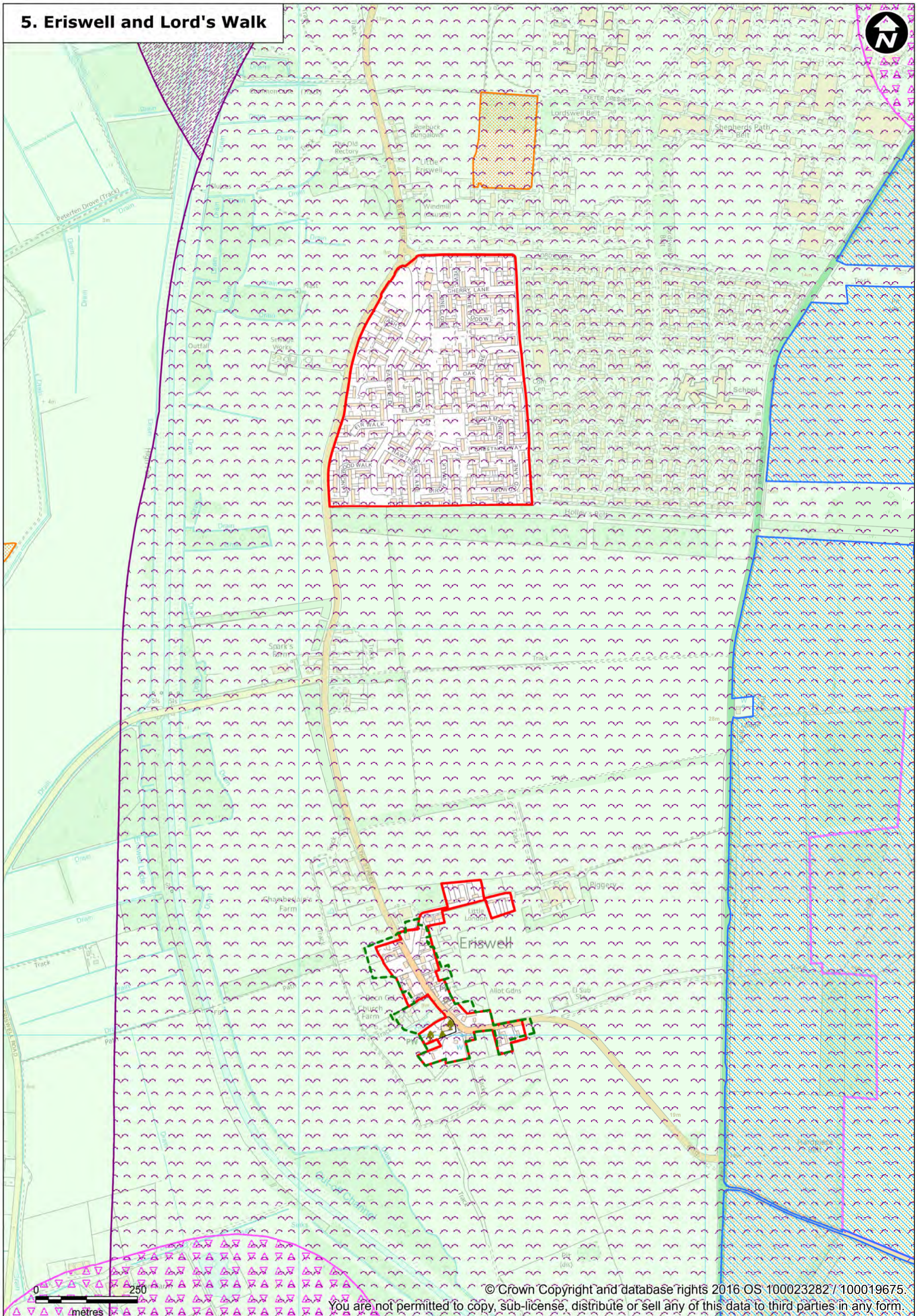






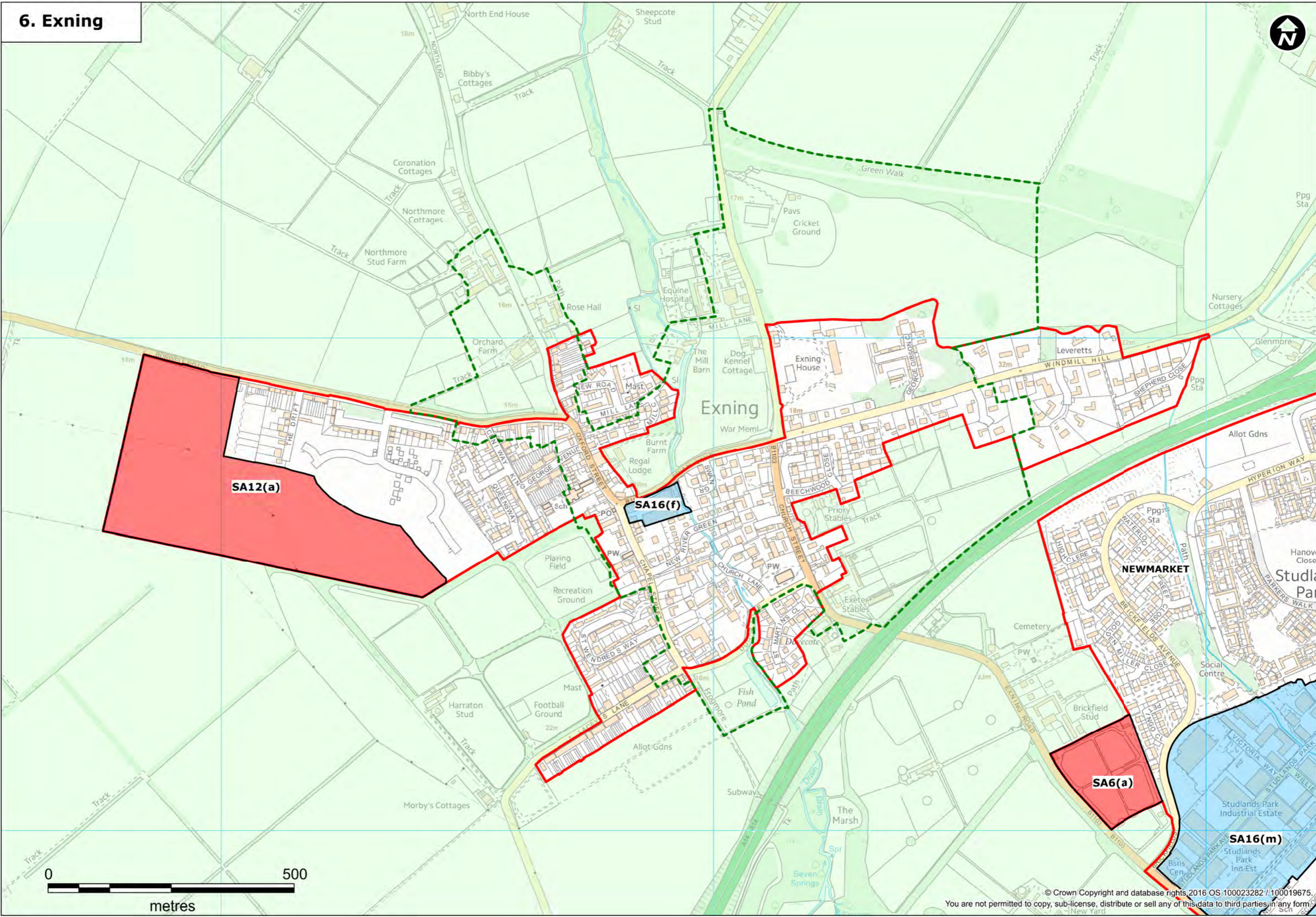


# 5. Eriswell and Lord's Walk





# 6. Exning



SA12(a)

SA16(f)

SA6(a)

SA16(m)

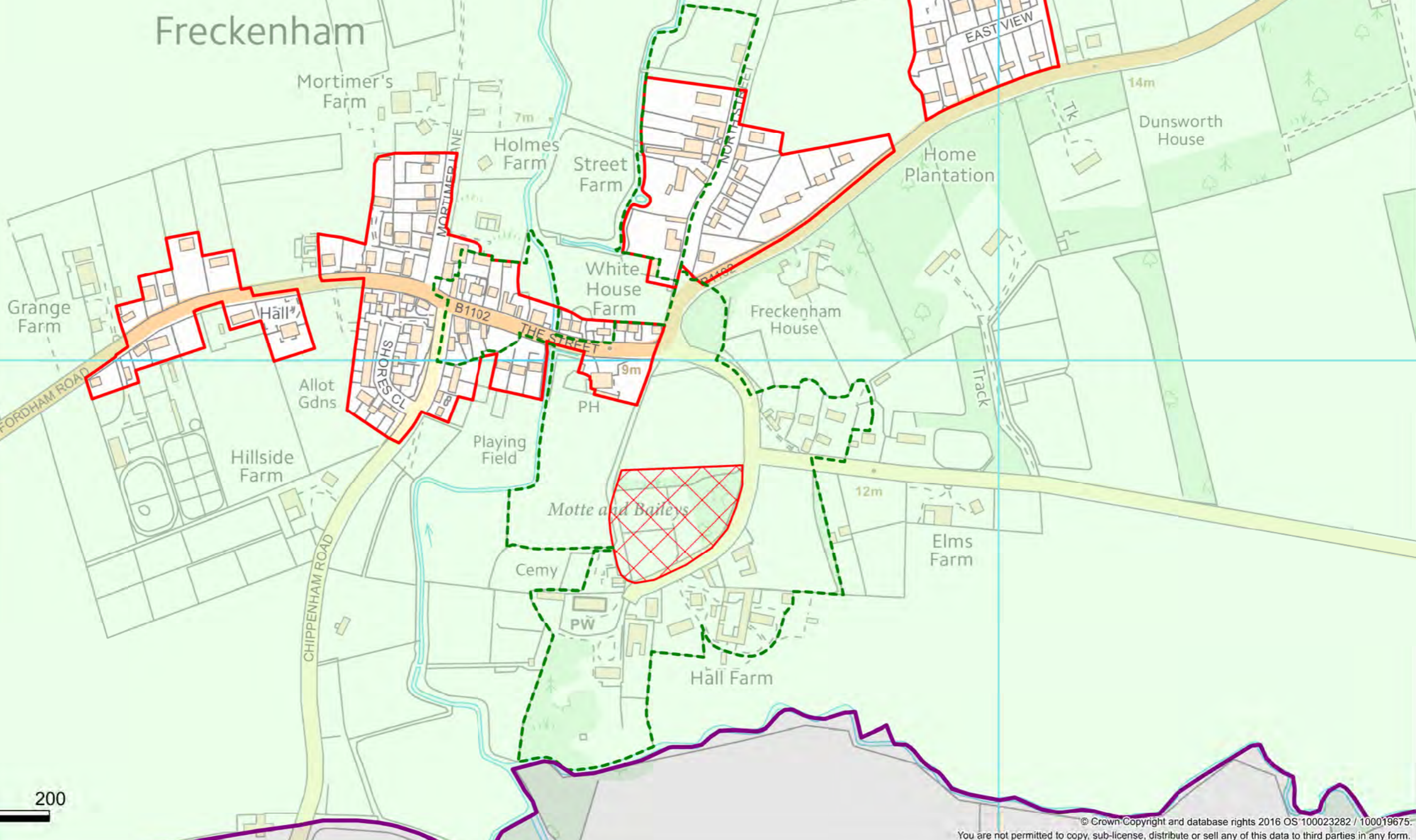


# 7. Freckenham

• 10m



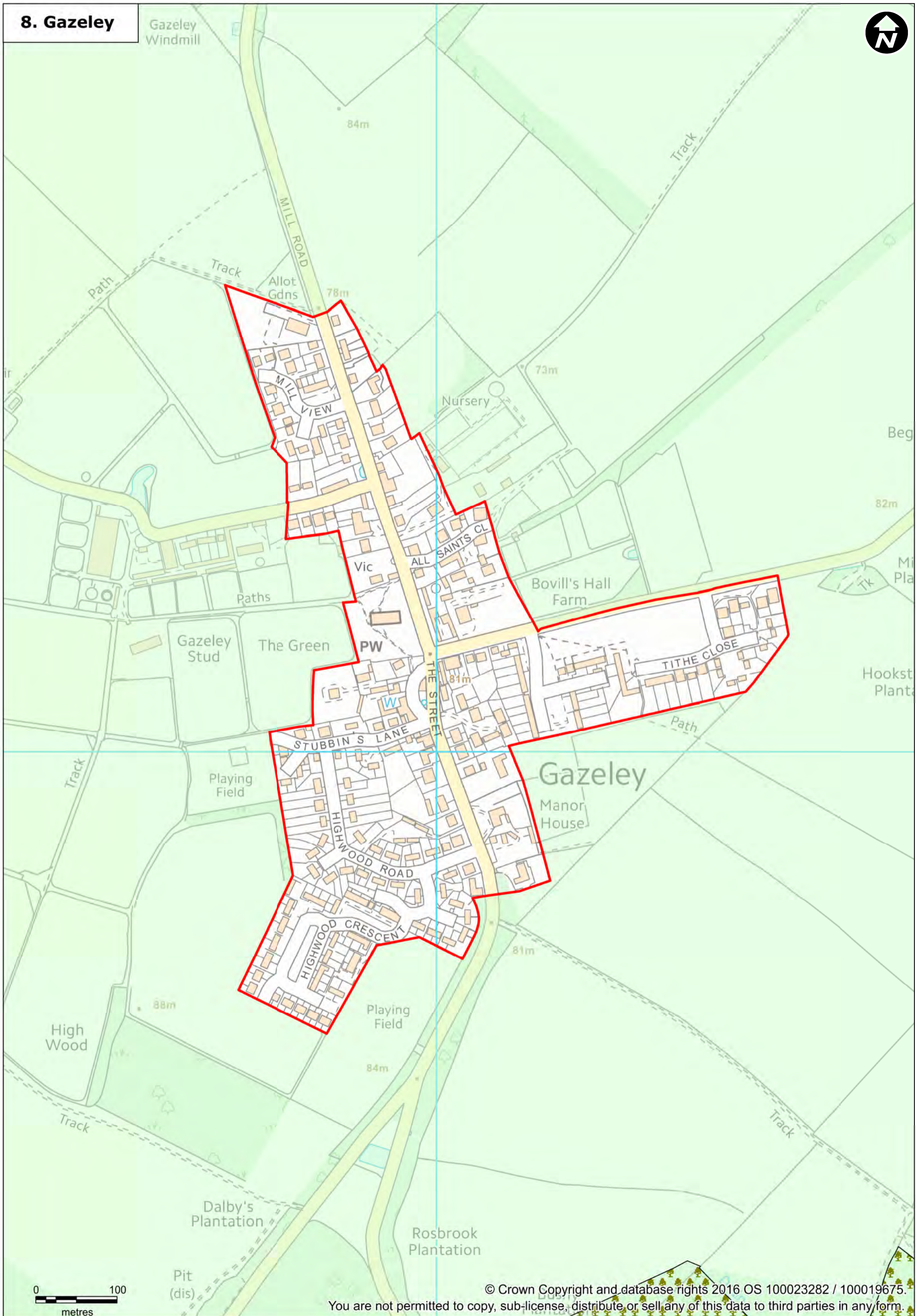
## Freckenham





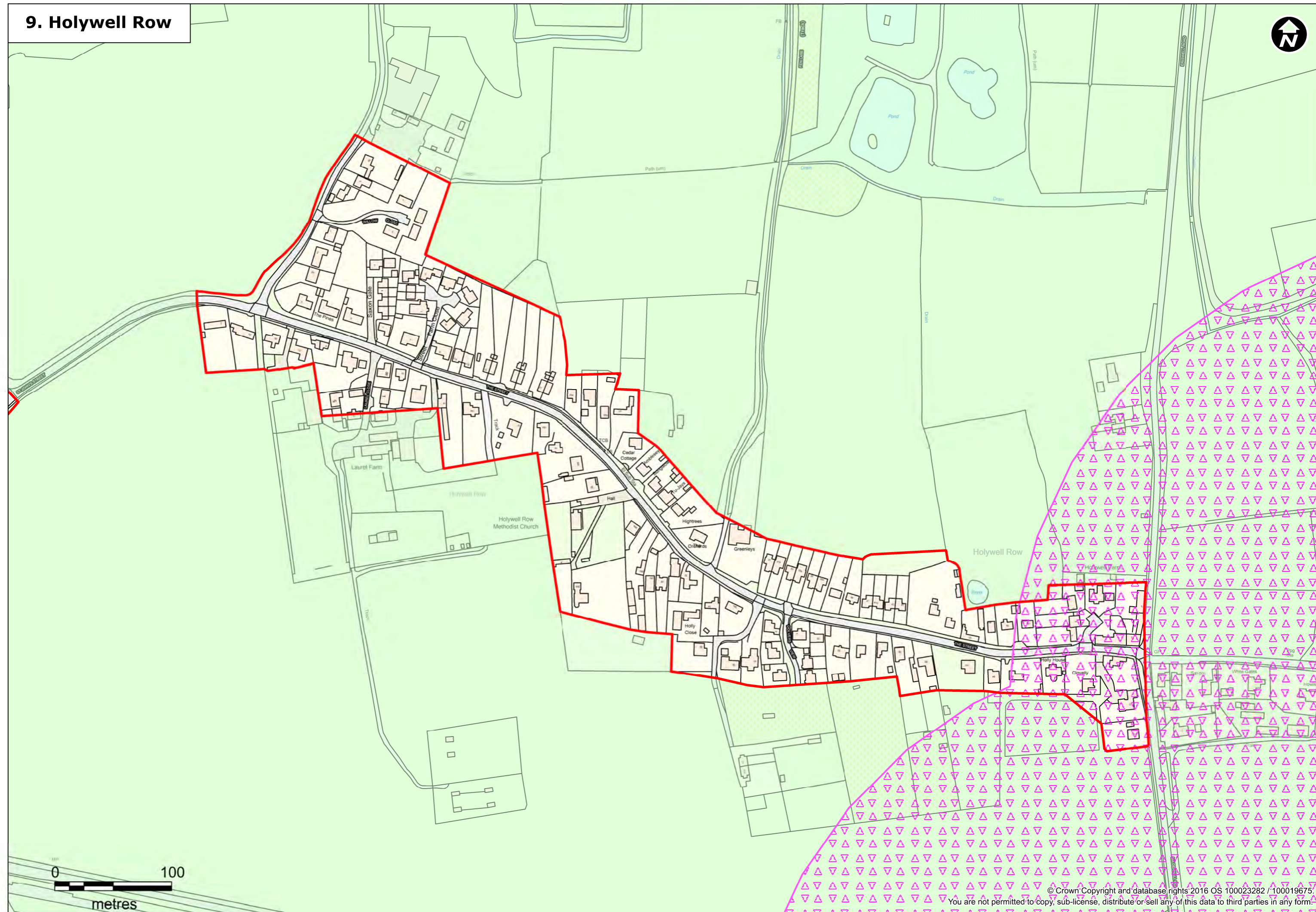
8. Gazeley

Gazeley Windmill



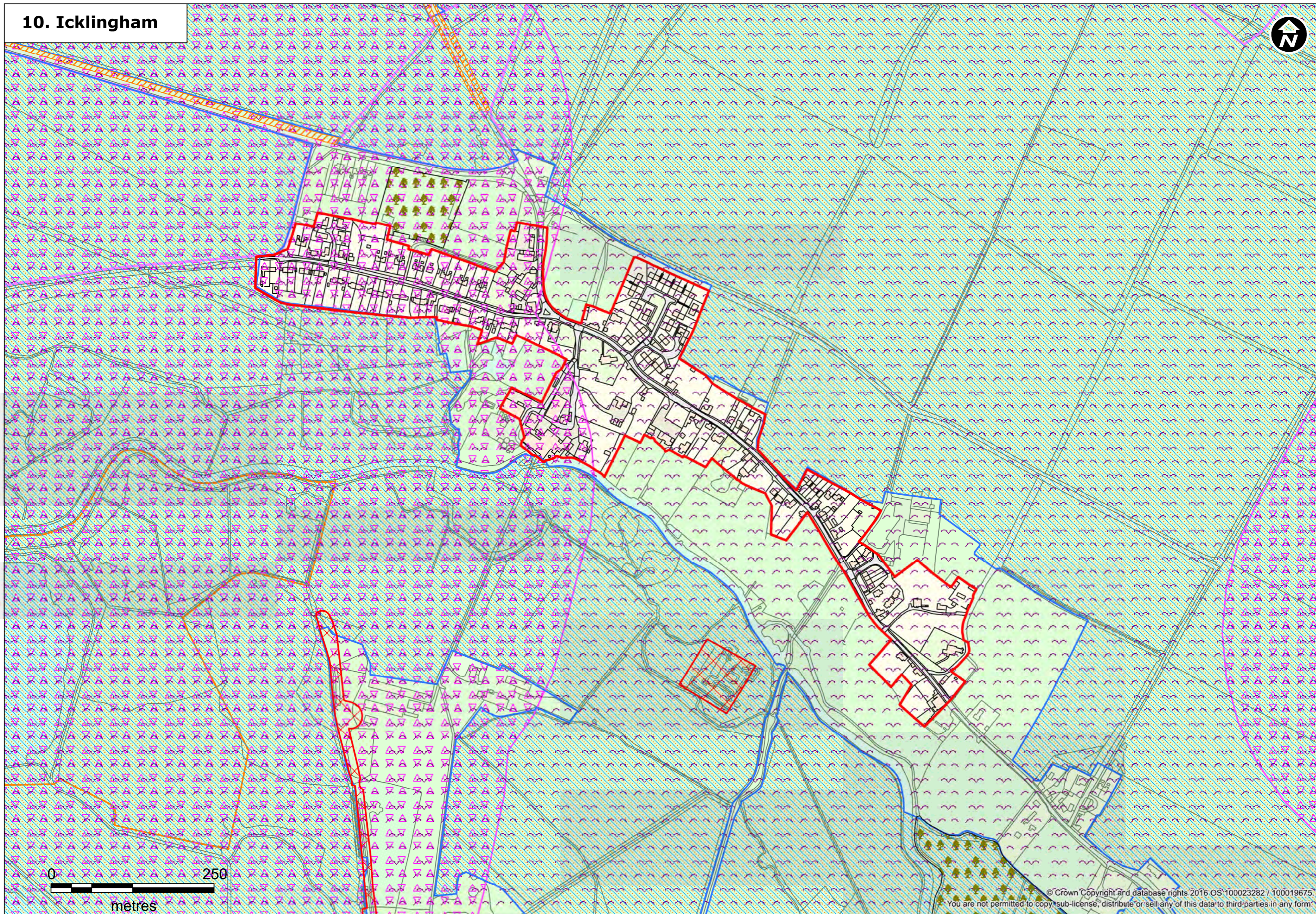


# 9. Holywell Row





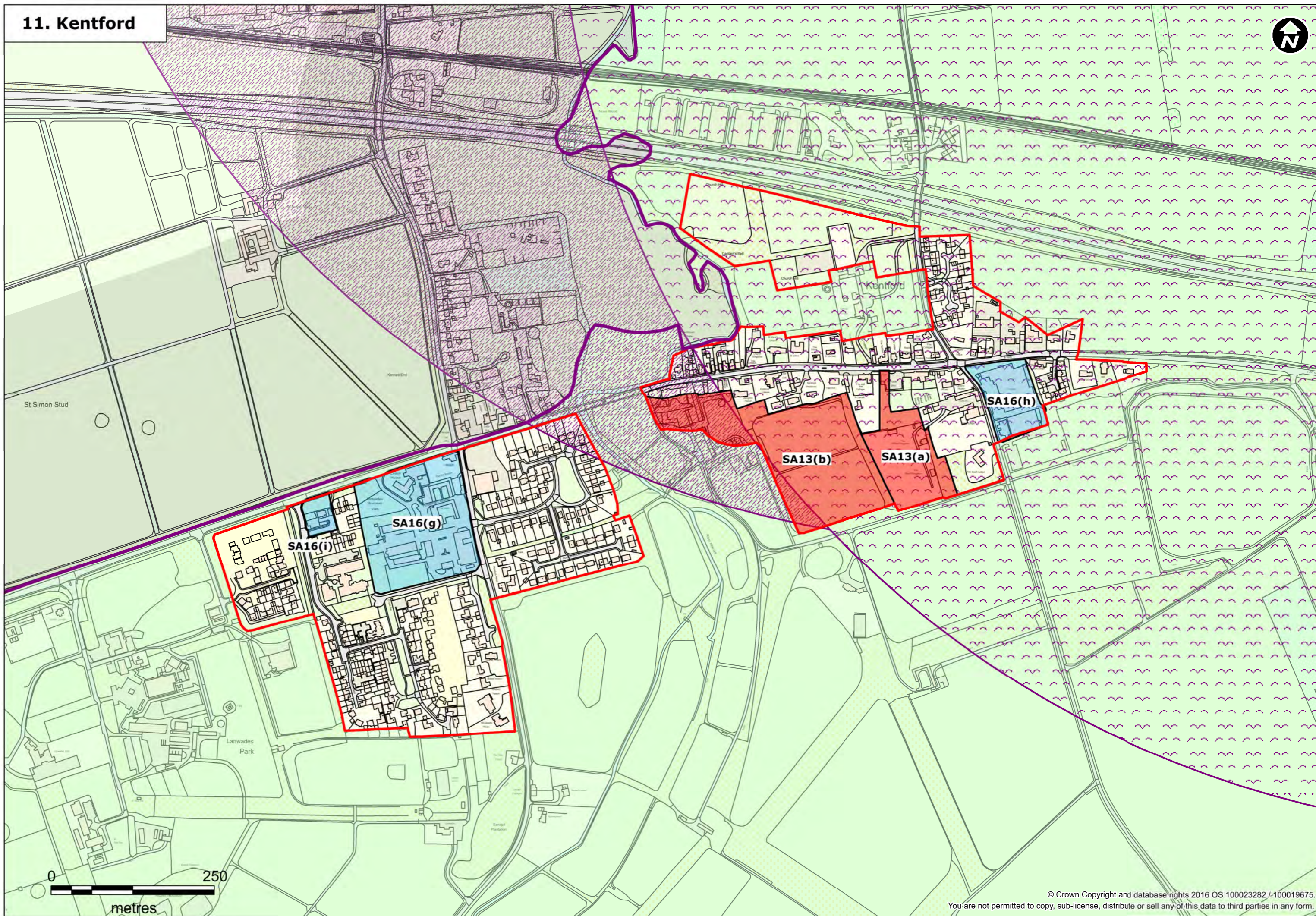
# 10. Icklingham



0 250  
metres



# 11. Kentford

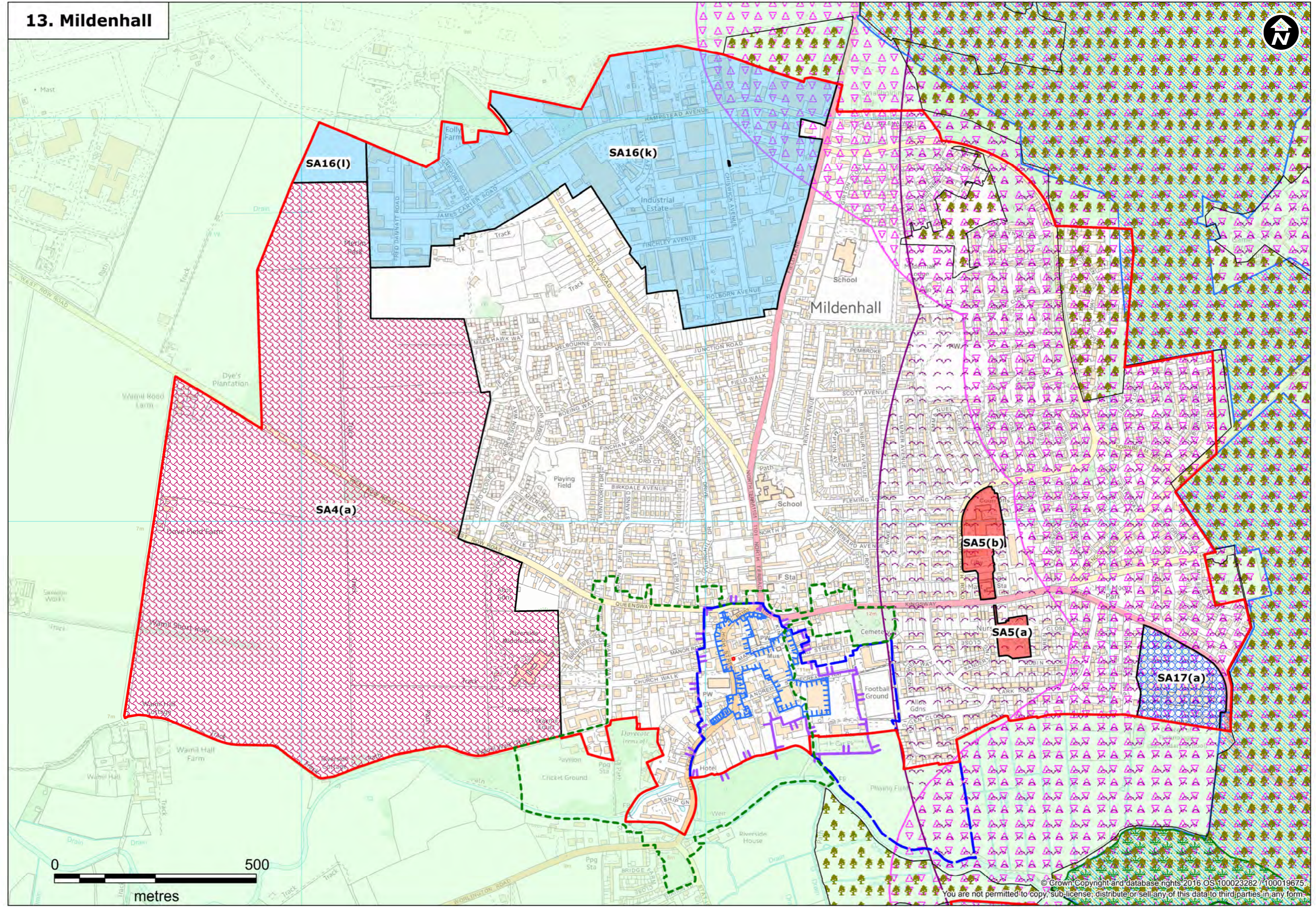






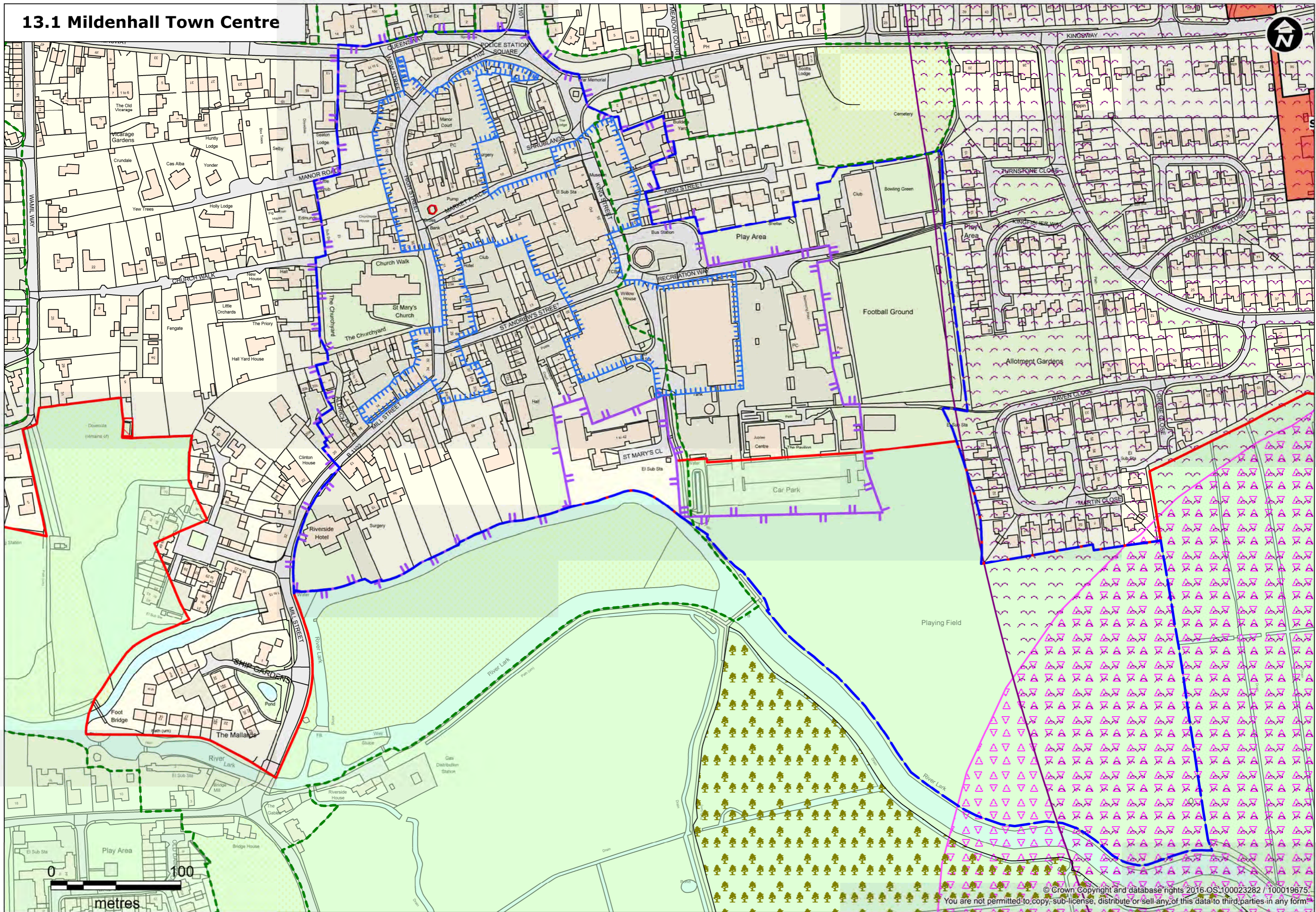


# 13. Mildenhall



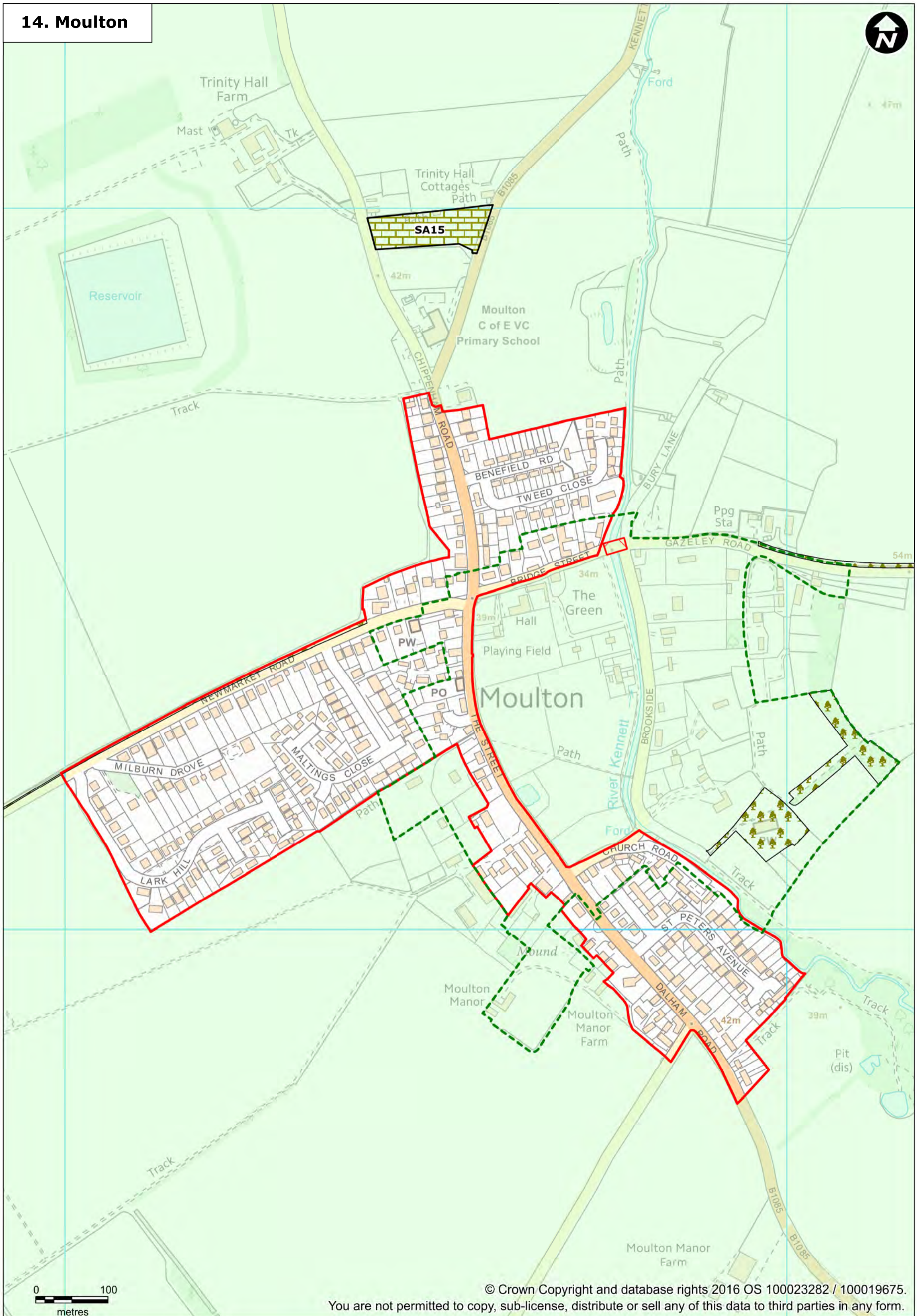


# 13.1 Mildenhall Town Centre





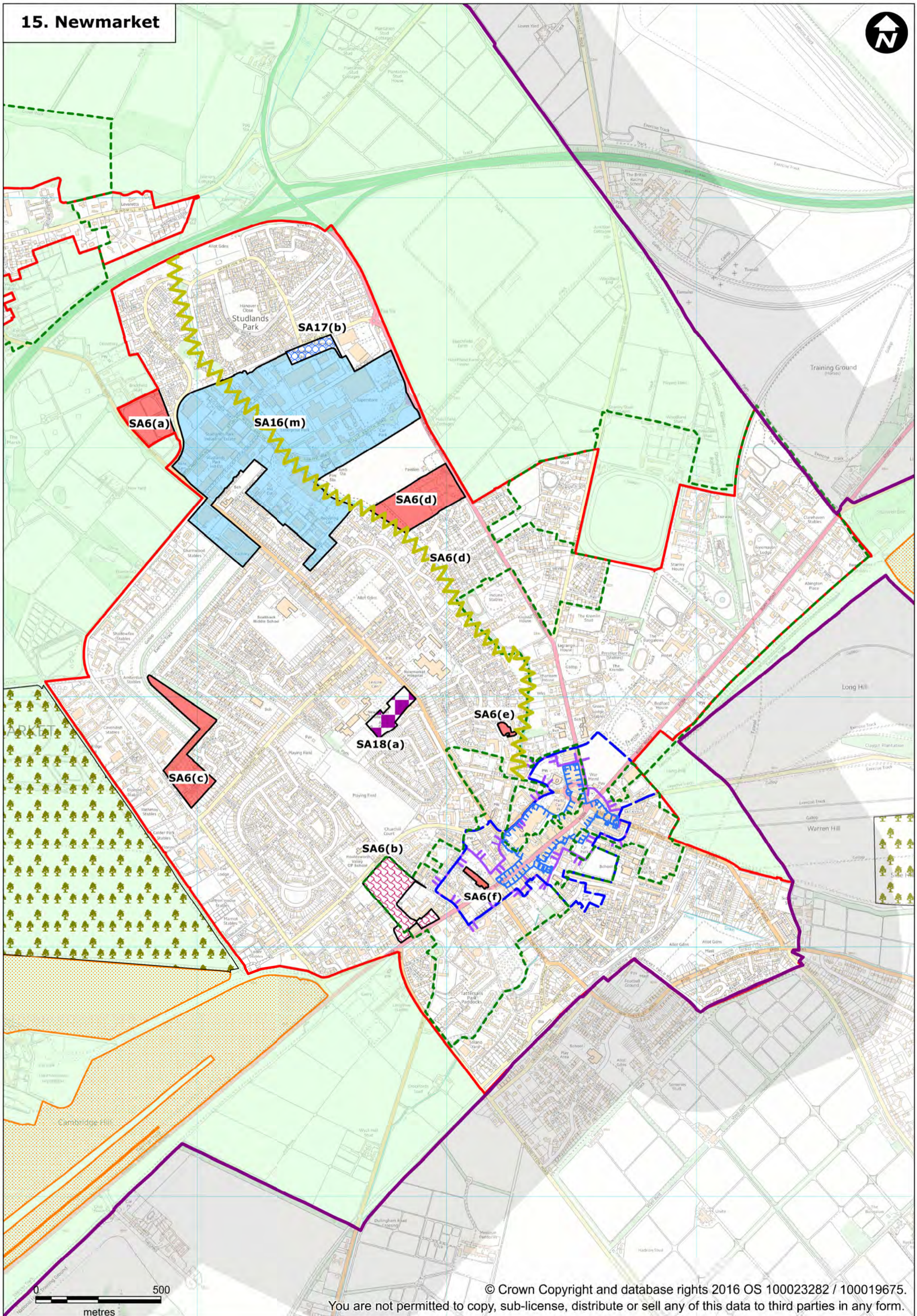
14. Moulton



0 100 metres

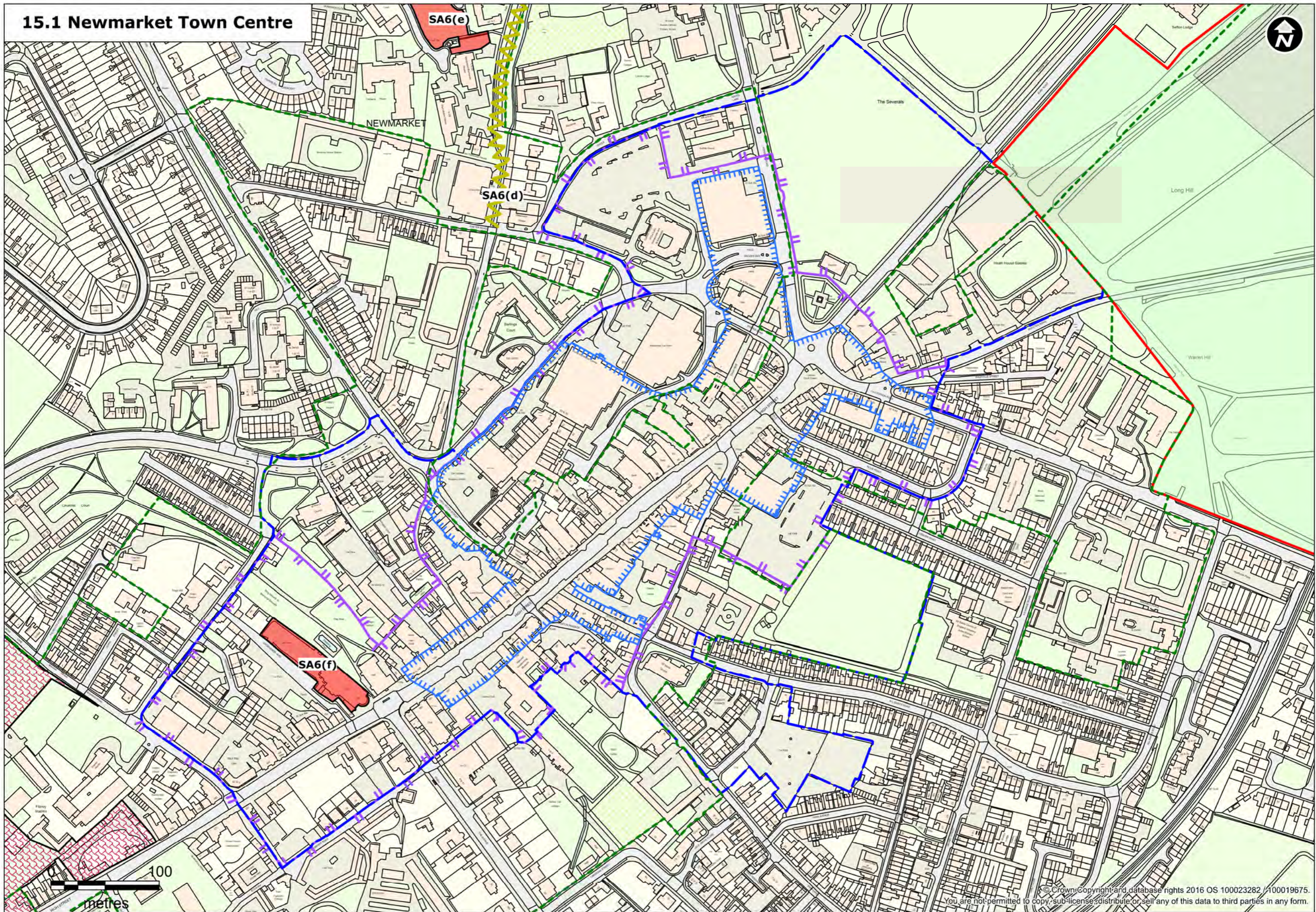


# 15. Newmarket



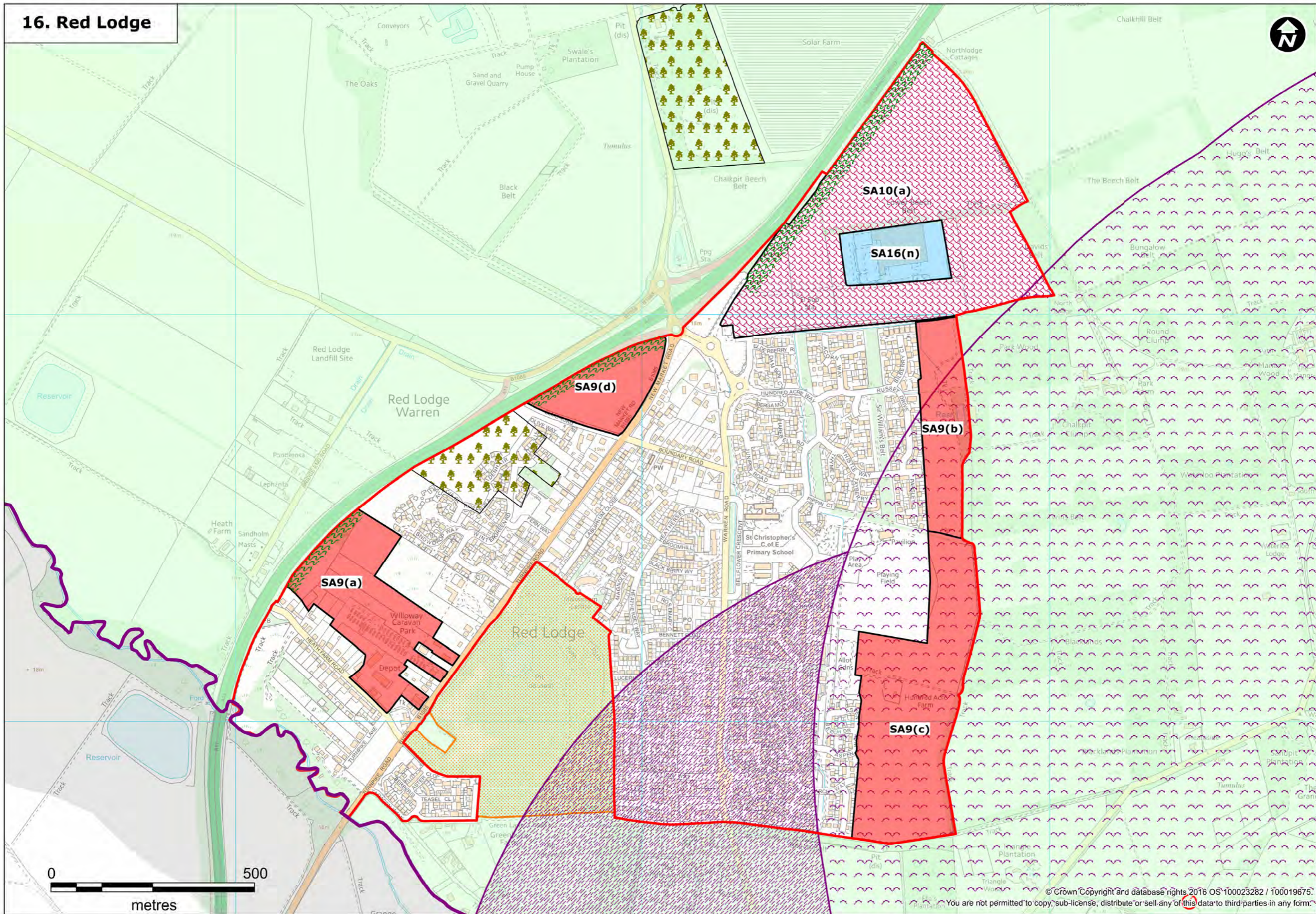


# 15.1 Newmarket Town Centre



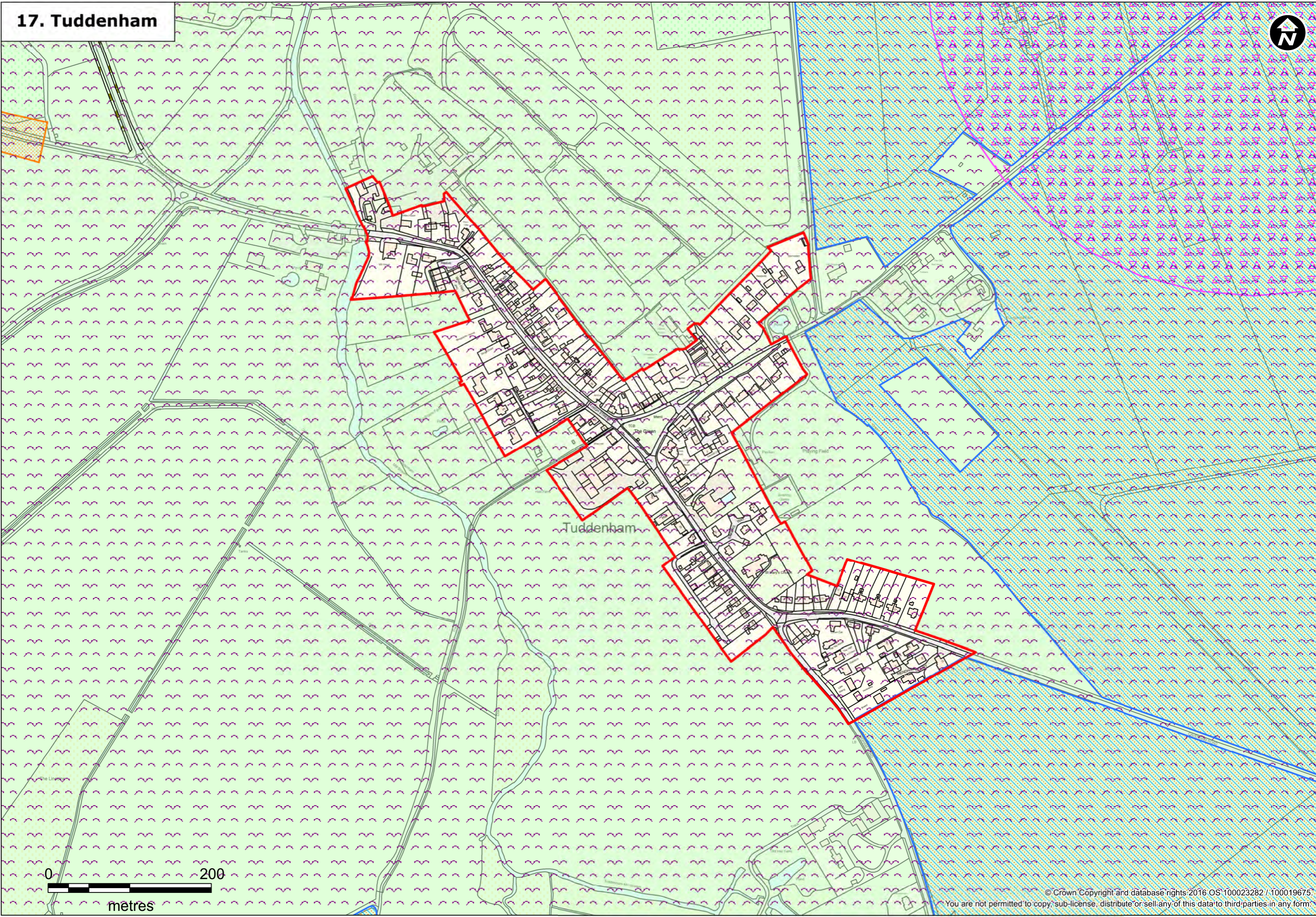


# 16. Red Lodge

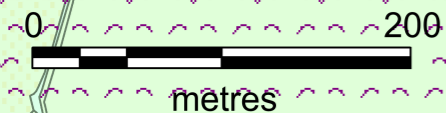




17. Tuddenham



Tuddenham









# 19. Worlington

